

**Daylight Savings
Time Ends at 2 a.m.
Sunday, Oct. 28.**
Turn Your Clocks
BACK One Hour!



Tickets still available

Just over two weeks remain until the Prairie Edge Players, along with the Eagle Lake Volunteer Fire Department, present the dinner theatre production of *He Done Her Wrong or Wedded But No Wife* by Anita Bell.

The dinner theatre is set for Friday and Saturday, Nov. 9 and 10, at the Prairie Edge Museum. Dinner is (See Tickets, Page 7)

Oct. 25, 2001

(USPS 163-760)
Volume 98, No. 32
26 Pages, 2 Sections Plus 2 Inserts
Eagle Publishing, Inc.
P.O. Box 67 — 220 E. Main St.
Eagle Lake, Texas 77434-0067
979-234-5521

35¢ PER COPY

Eagle Lake Headlight

NEWSBRIEFS

Booster Club selling Raider flags

The Rice Raider Booster Club is selling Rice Raider car window flags for \$12 each. There is a limited amount of flags available, so call Marla Cranek at 979-758-3625 to reserve your flag or take a chance and purchase one at the game this Friday.

Study Club Auction is Saturday

The Eagle Lake Study Club will present its 22nd Annual Auction Saturday, Oct. 27, at the Eagle Lake Community Center. The Firemen's Stew Supper will be from 5 to 7 p.m.; silent auction, 5 to 6:45 p.m.; bakery booth, 5 p.m.; and main auction starts at 7 p.m. Auction proceeds benefit the Eula and David Wintermann Library. Auctioneer will be Joe Herbert McCreary. There's no admission fee. Hunters are welcome! Door prizes will be given and the dress is casual.

Let's paint the town BLUE!

The Rice Raiders football team is 8-0 with two district games left and they're headed for the playoffs. The Lady Raiders volleyball team finished their district season Tuesday and are in the playoffs, too! Show your support by tying blue and white streamers on your car antenna and around your business entrance; paint your windows with messages; and/or put "Go Raiders" on your marquee (like Dairy Delite). Let's rally around our young athletes and enjoy their success!

Volleyball team send off

The Lady Raiders will have a playoff game Tuesday, Oct. 30. Plans were not yet finalized as of press time but a send off will be held as they head to the game. Listen for more information at the football games this Thursday and Friday. Show your pride by cheering the Lady Raiders on to V-I-C-T-O-R-Y!

WCJC presents play Oct. 25-27

The Wharton County Junior College (WCJC) Green Room Players present *The Spanish Wives* at the Horton Foote Theatre, Dunson-Hansen Fine Arts Building. Admission is \$4, and is free to WCJC students, faculty and staff. Show time is 7:30 p.m. each evening. For more information, call 979-532-6300.

CCA meeting is tonight

Combined Community Action Inc. (CCA) will hold a board of directors meeting Thursday, Oct. 25, at 6:30 p.m. at the Smithville Recreation Center. The public is invited to attend the meeting.

WCJC blood drive is Oct. 25

The Wharton County Junior College (WCJC) Student Government Association will sponsor a blood drive Thursday, Oct. 25, from 9 a.m. to 2 p.m. at the WCJC Pioneer Student Center. For more information or to schedule an appointment, call 979-532-6441. Appointment preferred, but walk-ins are welcome. Free t-shirt for donors. If you are not sure about medications you are taking, call 713-790-1200 to discuss donating.

Powder Puff game postponed

The Rice High School Powder Puff football game has been postponed until a later date, due to the Raiders reaching the playoffs. Watch *The Headlight* for further details.

Zimmerscheidt School to hold open house

The Zimmerscheidt School Open House will be held Sunday, Oct. 28, at 3 p.m. on FM 109 near Frelsburg. Activities will begin at 3 p.m. with live German music and a program. Chicken stew will be served at 5 p.m. Donations are being accepted for the meal and dessert. Bricks are also being sold for courthouse walk to fund school maintenance of the historic one-room school for \$50. For more details, call Crockett Leyendecker at 979-732-6693; Randa Simmons at 732-6948; or Otto Loessin at 732-3682.

Halloween Carnival is Sunday

The Ministerial Alliance of Eagle Lake is preparing the Second Annual Halloween Carnival hosted by Christ Episcopal Church (CEC) in the rectory backyard at 304 E. Stockbridge from 6 to 8 p.m., Sunday, Oct. 28. All parents are encouraged to bring their little ghouls, goblins and saints for an evening of food, drinks, fun and games... all for a minimal fee like last year. There will be a costume contest at 7 p.m. If there are any questions or you want to help, call your pastor or Fr. Steve Whitfield, pastor of CEC, at 234-3437. In case of bad weather the Carnival will be moved to Didner Hall, 201 Craine Avenue.

United Way Walk-a-Thon is Saturday

Join the United Way Walk-a-Thon this Saturday, Oct. 27, at 9 a.m. on the square to kick-off the United Way Fall Fund Drive. Kids young and old are asked to join the fun, dressed in their Halloween costumes. Cash prizes will be given this year for best costumes. Participants are asked to sign up sponsors who will pledge donations for the 5K walk, and bring the donations with them Saturday. Refreshments and United Way prizes will be given to all participants. Please come!

CRTA to host turkey shoot Sunday

The Colorado River Trailriders Association (CRTA) will host a turkey shoot at Christine's in Shaws Bend Sunday Oct. 28, from 1 p.m. to sundown.

Booster Club meeting is Oct. 29

The Rice Raider Booster Club will meet Monday, Oct. 29, at 7 p.m. in the commons at the high school. All Raider parents and fans of seventh grade through varsity girls and boys sports are urged to attend.

Thanksgiving turkey fry slated

If you would like to have the Eagle Lake Masonic Lodge prepare a fried (See Newsbriefs, Page 7)

Raiders win thriller at Sweeny, 21-15

The state-ranked Rice Raiders traveled to Sweeny Friday night for a 24-3A showdown. What the Raiders found upon arrival was a fire-up Bulldog squad. But, a great comeback in the fourth quarter allowed Coach Russell Roark's Rice Raiders to escape with their lives in a 21-15 action-packed game.

Sweeny entered Friday's contest with a perfect 3-0 district mark while Rice came in with the same. The win raises the Raiders record to 8-0 on the season and 4-0 in the district 24-3A loop. District rival Sealy also beat Wharton, 20-14, Friday night to extend their district mark to 3-0.

Rice got off to a slow start in the opening quarter when the Bulldog quarterback hit flanker Johnnie Higgins on a 34-yard scoring strike.

On the ensuing kickoff, the Bulldogs recovered a bobbled Raiders' fumble and took over at the Raider 46-yard line. Two plays later, the Bulldogs popped another big play on the Raiders to extend the lead to 12-0.

After exchanging two possessions each and the Raiders struggling with special teams problems, both teams went into locker rooms at halftime with the Bulldogs up 12-0.

Coach Roark added, "At halftime, we were very worried and concerned, but we didn't panic. We made a few simple adjustments and told our players to go out and play like they're capable of playing. That's just what they did. I was very proud of our second half composure."

The Rice squad did just that. They took the opening kickoff of the second half and marched it 63 yards for a touchdown. The drive was completed by a Conrad Diggs 17-yard run behind

great blocks from Jason Barrow and Ricky Cunningham. The PAT kick went wide right; the score was 12-6.

Following a 38-yard field goal by the Bulldogs late in the third quarter, upping their lead to 15-6, the Raiders once again marched down the field. Following back to back nice runs by Jerry Cleveland and Diggs, quarterback Patrick Milentz threw two incompletions in a row.

On third and long, Rice ran a reverse pass that was sacked for a seven yard loss. On fourth and 18 yards to go, Milentz found some magic in his right arm when he hit flanker Jessie Upson on a 33-yard strike down to the one-yard line.

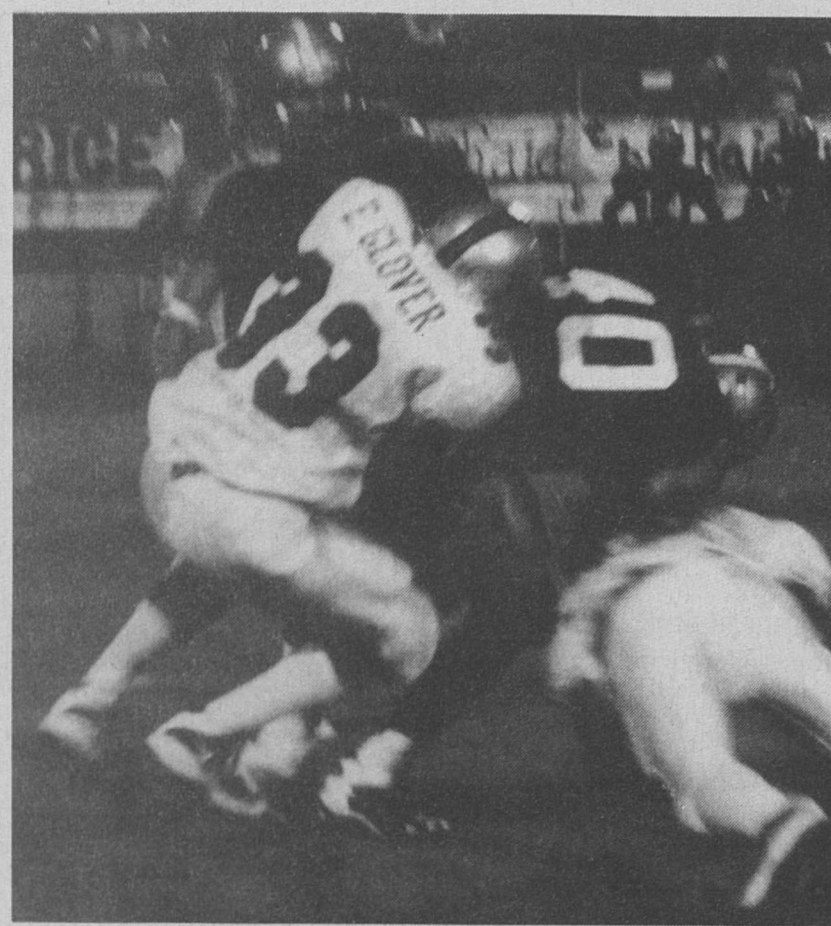
Milentz dialed his own number for paydirt on the next play to cut the Bulldog lead to 15-13, following Milentz's PAT kick.

With only 5:09 left in the quarter (and the game!), Rice attempted a strange outside kick. The ball went straight to the Bulldog's front line players and Sweeny took over in great field position at their own 48-yard line with a 15-13 lead.

That's when Rice's defense rose to the challenge with three straight plays netting negative yardage. With only 3:50 left in the contest, it looked like Rice was going to be pinned inside their own 20 yard line. Instead, sophomore return specialist Mike Spears showed some "lightning in a bottle."

On an electrifying 38-yard punt return, Spears gave the Raiders great field position with the game on the line.

From that point on, the Raider offensive line took over the contest. With Diggs and Cleveland pounding away at the Bulldog defense, the Raid-



One of the few bright spots in the first half of last Friday's game in Sweeny was when Raider #33, Eddie Glover, threw the Sweeny running back for a loss. Glover was credited with a total of five tackles. *Headlight Photo*

ers marched their game-winning drive down the field and stuck it into the endzone with 1:26 to play.

It was again Milentz on a 1-yard run that vaulted the Raiders into their first and final lead. Diggs powered in the PAT run to make the score 21-15.

After a couple of scary moments, Upson picked off a hail-Mary pass

near the endzone to end the contest and keep the Raiders undefeated.

Coach Roark added, "This was a great, emotional victory for us. Even though we know we didn't play well tonight, we did do what it took to win. To win a district title, you have to win the close games. Sweeny played their (See Varsity, Page 8)

Confusion

One of the oppositions to a groundwater conservation district (GCD) is that we don't need one right now with the acknowledgement that maybe in 50 years we might.

This reminds me of the saying: "Today is the tomorrow that you were going to do so much about yesterday." I have tried to convey to you in previous articles that the need is here and now for a number of reasons:

Current water marketing activity

There is a rush to acquire groundwater leases in the southern part of the county before the election. Offers of \$50 per-acre bonus and from \$100 to \$225 per-acre royalty payments during production in a 30-year lease agreement have been reported. Volumes of groundwater to be pumped are not identified in the leases. (Note that the 30-year term signifies that the project is now, not 50 years distant.)

Another near term impact on our groundwater supply is the Region K part of the State Water Plan in which LCRA, pending project feasibility studies, is to supply irrigated agriculture with groundwater during shortages caused by a re-occurrence of the drought of record shortages.

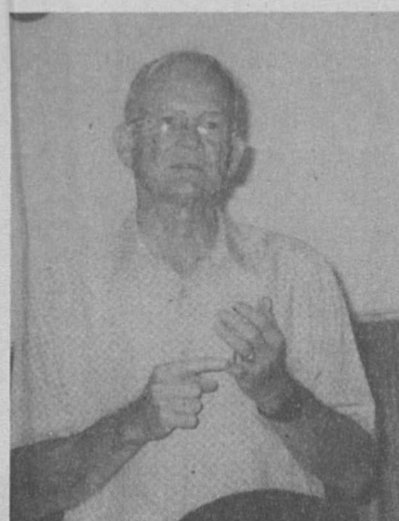
Demand on a finite resource

With the increase in Texas' population by almost 23% in the 10 years from 1990 to 2000 and the forecast of the state's population to double (underestimated?) in the next 50 years, water planners for water-short large cities and consequently water marketers are seeking water supplies from the nearest, most economical sources.

Rural counties such as ours that lie within reasonable distance to the large cities of Houston, San Antonio and Austin and have reportedly large amounts of underutilized groundwater resources have been identified as meeting this requirement.

Without a GCD to manage groundwater use through rules on well spacing, production limits and permitting process, you will have no way to prevent water leaving the county in uncontrolled volumes. Is it possible that some of our neighbors are arguing against a district just to insure that there are no restrictions on the amount of water that they can sell? I hope not.

Lack of knowledge of the aquifer
The state recognized that more accurate numbers were needed about the amount of groundwater available in the aquifers and the amount of replacement or recharge of this water



Pickens gets a point across during a recent informational meeting in Eagle Lake.

before water plans can be meaningful. Currently three studies are being done on different but overlapping areas of our underlying Gulf Coast Aquifer to improve the numbers.

The problem is the results of these studies will still be too regional to use for answering questions of how much groundwater is available in say the Frelsburg area, the Columbus area or the Eagle Lake area. So, contrary to belief, we don't have much detail knowledge about the aquifer. There

have been reports of water quality problems, the need to drill new wells and the drilling of more than one well to find sufficient water; however, this information has not been scientifically compiled and analyzed.

A GCD can be viewed as water insurance and protection of "your individual right" to use the groundwater as you see fit. Without groundwater management provided by a GCD, you risk not having any water on which to use your right to capture. If you don't want to insure having water, that is your choice.

Another trouble shooting issue for some people is the vote for the 5¢ per \$100 assessed valuation cap on any funding of the district. The district's enabling act specified four funding options for the district:

- 1) An ad valorem tax at a rate not to exceed 5¢ per \$100 valuation;
- 2) Assess fees for services or for water withdrawn from non-exempt wells;
- 3) Solicit and accept grants from any private or public source; or
- 4) Assess a transport fee on water exported from the district.

State law requires the taxpayers vote on the maximum rate of tax that can be levied. This doesn't mean however, that you're approving taxes to be the sole funding source for the district.

The decision on how to fund the district will be based on the outcome of public hearings held by the permanent Board of Directors on funding and budgets.

As I said in a previous article, if the maximum tax issue fails and the District passes, then fees are to be used to fund the district. We cannot pay for a district by charging the maximum fees allowable because of our currently low use of groundwater.

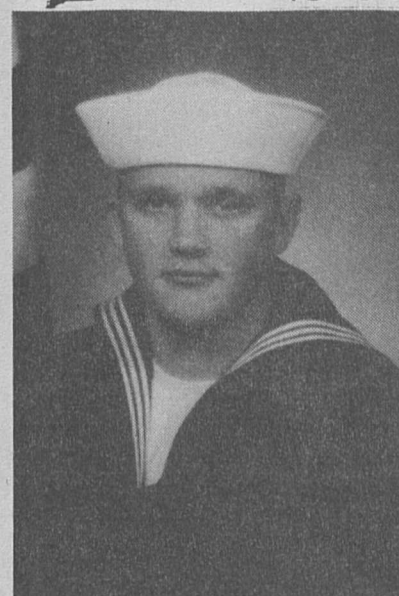
At this point, I would like to reiterate that the Temporary Board of Directors supports the position that there will be no meters placed by the district on either exempt (<25,000 gpd) or non-exempt (>25,000 gpd) wells nor fees charged for groundwater on exempt wells.

Finally, all "more bureaucracy" statements indicate a lack of understanding of what local government means. Local government means you, the public, can have your voice heard at required public hearings on funding (how to pay for the district), budgets (how money is to be spent) and rules of the district.

It also means all meetings are open to the public. That means local government by local people to manage local groundwater. How can a district do anything other than what the public wants them to do?

Submitted by Bob Pickens

Salute to Area Service Personnel



FCSN Ralph Gertson III
U.S. Navy Fire Controlman (electronics technician) USS Nassau LHA-4 Norfolk, Virginia. 1999 Rice High School graduate, son of Ralph and Connie Gertson of Eagle Lake.

Sgt. Jacqueline Parsons
410th MP Co., Fort Hood, Texas, age 28, currently stationed in Egypt. Daughter of Jack and Elaine Dromgoole of Eagle Lake and mother of Justin and Jalen and aunt to Ashley.



WEEKLY MIGRATORY BIRD HUNTING REPORT

The following report is produced for Texas Parks and Wildlife by Bink Grimes. (Updated Oct. 17.)

Coastal Prairies: Strong concentrations of specklebellies are using second-cropped rice fields in the Garwood, El Campo and Eagle Lake areas.

Reports from North Texas have indicated the snow goose flight has begun. Frozen conditions on the tundra have prompted an early flight.

Look for flocks of snooks to build with each front.

Pintails, shovelers, gadwalls, blue-winged and green-winged teal are roosting on ponds and potholes in the region.

Prospects for the Oct. 27 duck and goose opener are excellent.

Dove hunting has been good over rice and milo fields, though hunters have lost interest in anticipation of the upcoming waterfowl season.